



REID PARK ZOOLOGICAL SOCIETY 2021-2022 Annual Report



Dear Zoo Friends,

In 2021-2022, Reid Park Zoo emerged through the recent pandemic-influenced years as a stronger, more flexible organization. And we remain more committed than ever to our mission to save wild animals and wild places, while inspiring memories.

We welcomed over 560,000 guests – the third highest attendance in our 57-year history and a testament to the Zoo’s value and accessibility to our community. We were able to return to an in-person ZOOcson, which raised the highest amount of funds ever and experienced record attendance for our Boo at the Zoo and ZooLights holiday events establishing the Zoo as a place for people to connect and spend quality time.

We were thrilled to resume daily animal presentations and docent interactions, providing guests with a deeper perspective and enhanced Zoo visit. And, learning from their popularity and guest feedback, we made other amenities offered during the pandemic a regular part of our Zoo offerings, including online behind-the-scenes tours, online ticketing and virtual field trips. A very special part of these options includes providing one-on-one animal experiences via tablets for children in our local hospitals.

We discovered through an extensive community conversation that we can be better community members when we include everyone. We added monthly community updates on Zoo projects and found a flexible, ‘win-win’ solution for the Zoo’s expansion that will increase green space in the park we call home.

We continued to grow as our Diversity, Equity, Access and Inclusion (DEAI) team examined hiring practices, implemented relevant staff training, and increased opportunities for members of staff to provide feedback and request support.

Most importantly, we redoubled our commitment and efforts at exceeding industry standards for animal care. Our animal welfare team met regularly to review data collection, enrichment programs, and medical and behavioral vitals with a goal that every animal is not only healthy and well cared for, but is living a life well-lived. And, we were proud to contribute to field projects with wildlife partners around the globe to protect and preserve threatened and endangered species.

Your support of the Zoo fuels our success. Thank you and welcome back. We are glad to see you!



A handwritten signature in black ink that reads "Nancy J. Kluge". The signature is fluid and cursive.

Nancy J. Kluge
Reid Park Zoological Society
President & CEO



OUR MISSION

Reid Park Zoo's mission is "to create inspiring memories for all by connecting people and animals to ensure the protection of wild animals and wild places."

FOUNDATION MISSION

To leave a legacy for the future enhancement of Reid Park Zoo and conservation of wild animals and wild places throughout the world.



BY THE NUMBERS



568,987
Guests



16,260
Member Households



74,662
Newsletter Subscribers



33,728
Instagram Followers



92,472
Facebook Followers



7,642
Twitter Followers



3,743
YouTube Followers



DEAI

Reid Park Zoo has a staff committee dedicated to Diversity, Equity, Access, and Inclusion. The group works to make the Zoo a more welcoming, safe, and celebratory place, both for both members of staff and guests from the community.

DEAI TEAM PURPOSE STATEMENT

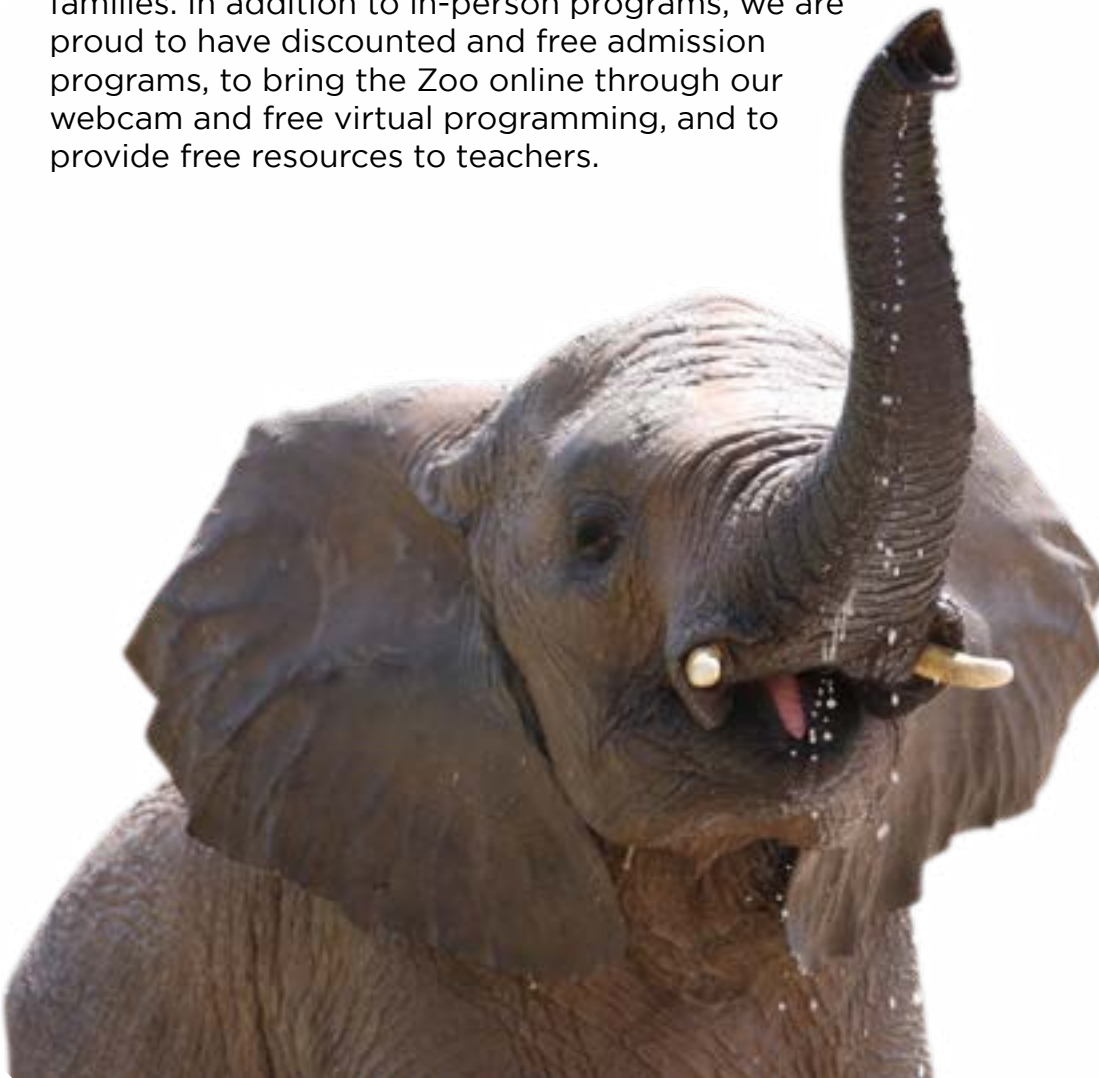
We acknowledge that Reid Park Zoo can best achieve its mission when its staff, volunteers, and guests reflect the southern Arizona community. The goal of the staff DEAI team is to visibly show Reid Park Zoo's appreciation of diversity by identifying steps we as a staff can take towards

- increasing diversity in staff and volunteers;
- ensuring we are welcoming to people from marginalized communities and their allies;
- identifying and removing barriers to ensure that all voices are welcome and heard.

The team reviewed internal job postings and employee handbooks, examining cultural appropriation versus cultural appreciation and how that looks at our Zoo. We achieved 70% bi-lingual signage throughout the Zoo, brought back sensory kits for guests with heightened sensitivity, and partnered with the University of Arizona Center for Excellence in Developmental Disabilities. We know that true change means a continual improvement process that is never done.

COMMITMENT TO CONNECTION

Reid Park Zoo is nothing without the community that surrounds it. It is important to be accessible to everyone regardless of economic status. Through Community Access Programs and discount ticket programs like summertime's \$3 Ticket Tuesdays, Reid Park Zoo is dedicated to making the Zoo and its programs available to low-income and underserved children and families. In addition to in-person programs, we are proud to have discounted and free admission programs, to bring the Zoo online through our webcam and free virtual programming, and to provide free resources to teachers.



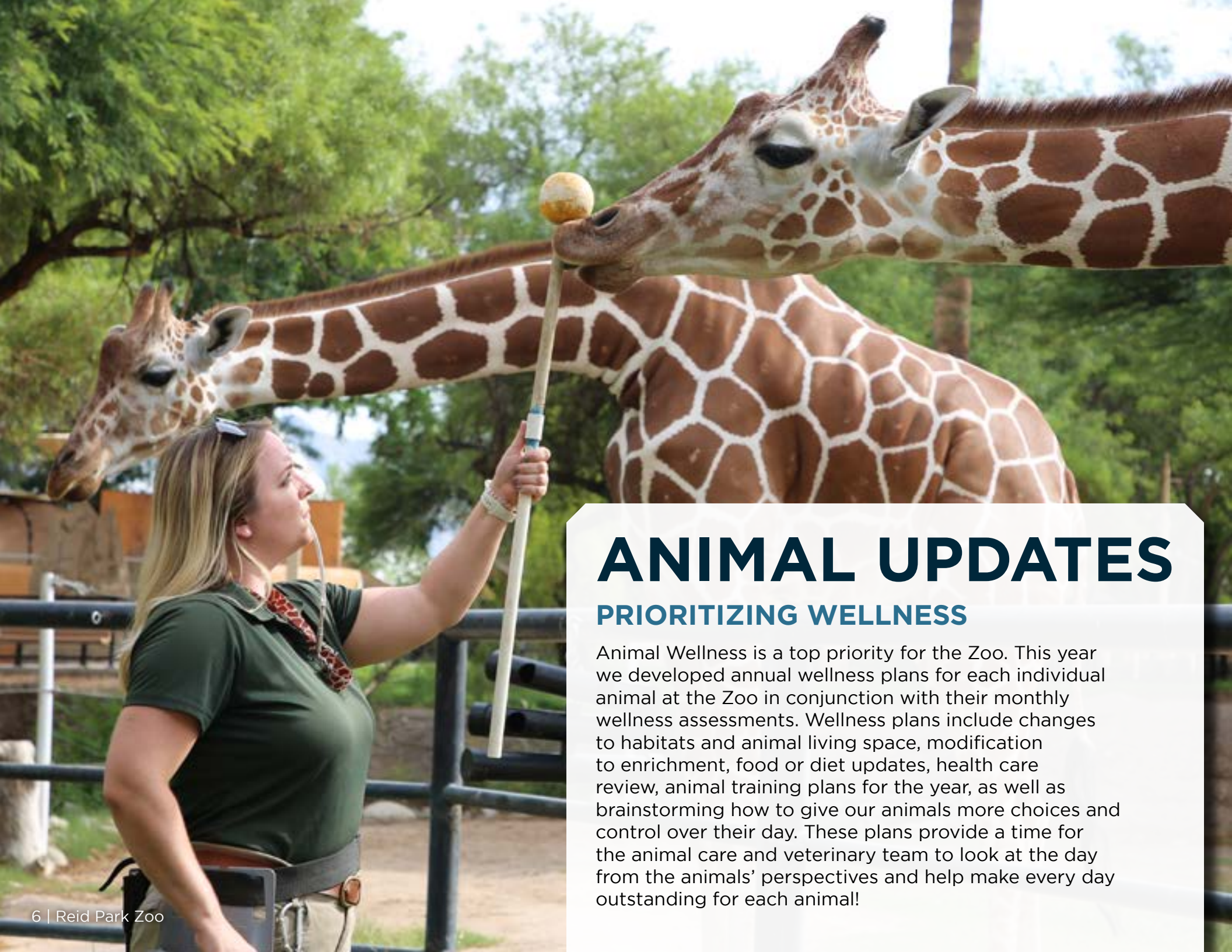
15,687
Discounted admissions for
EBT cardholders

863
Guests at Dream Night

11,419
Students on Field Trips

4,067
Guests Through
40
Social Service Memberships

44%
of Education Programs Were
Grant Funded, Reaching
54%
of Total Participants



ANIMAL UPDATES

PRIORITIZING WELLNESS

Animal Wellness is a top priority for the Zoo. This year we developed annual wellness plans for each individual animal at the Zoo in conjunction with their monthly wellness assessments. Wellness plans include changes to habitats and animal living space, modification to enrichment, food or diet updates, health care review, animal training plans for the year, as well as brainstorming how to give our animals more choices and control over their day. These plans provide a time for the animal care and veterinary team to look at the day from the animals' perspectives and help make every day outstanding for each animal!



WELCOME BACK, JOAQUIN!

Andean Bear Joaquin was born at Reid Park Zoo in 2002. He has returned as part of the Association of Zoo & Aquariums Species Survival Plan with a breeding recommendation with his companion, Oja.



BIG BLUE BIRDS

With the help of our incredible animal care team, two blue-crowned pigeons were successfully hatched and raised. This vulnerable species is at risk of becoming endangered, and oftentimes is unsuccessful in raising their offspring. Our bird experts were able to hand raise two chicks to maturity in an effort to help the species' population.

HELLO, HAROO!

In October, Reid Park Zoo welcomed the birth of Grevy's zebra foal Haroo! Haroo spent this year learning how to graze on his own, and developed an appetite for carrots. Grevy's zebras are an endangered species, with fewer than 2,000 remaining in the wild. Reid Park Zoo participates in Grevy's Zebra Species Survival Plan and Haroo acts as an ambassador for his species, connecting our community with his cousins in the wild.



CONSERVATION

Reid Park Zoo supports several SAFE (Saving Animals From Extinction) programs, which are groups managed by Association of Zoo and Aquarium institutions with a focus on studying genetics, health care, vaccines, etc that do have impacts on wild species.

Reid Park Zoo is a leader in the Andean Highland Flamingo SAFE program, which is monitoring wild birds to learn more about the species it protects, and has developed informational signs and booklets to help with conservation education in Chile. Reid Park Zoo also supported the Andean Bear SAFE and African Painted Dogs SAFE programs with donations this year.

Reid Park Zoo works closely with international and community partners to support the care and conservation of animals locally and globally.

Humane Society of Southern Arizona

Tucson Wildlife Center

University of Arizona Foundation Black Bear Research Project

—

Wildlife Conservation Society/Malayan Tiger Conservation

Baird's Tapir Survival Alliance

Anteaters and Highways

Giraffe Conservation Foundation

Wildlife Conservation Network's Lion Recovery Fund

Tanzania Conservation Research Program

Andean Bear Conservation Alliance

EDUCATION

Educating guests about the animals in our care (and their wild cousins!) is paramount in connecting our community with the conservation of wild animals and wild places. Through daily animal presentations, programs for children, and daily guest interactions, Reid Park Zoo's education department inspires guests to make choices that help protect the environment and everyone in it.

This year, our education team taught **14,809 people**, 61% of whom received Zoo education experiences for free due to grant funding or programs provided at no cost





VOLUNTEERS

Reid Park Zoo has an incredible community of volunteers who donate their valuable time to the Zoo every day! Their generous support makes a big impact.

91,633
Volunteer & Guest
interactions

\$467,193
Volunteer
Monetary Value

14,707
Guest Visits to
Interpretive Carts

4,711
Intern Hours

15,599
Volunteer Hours

53
Interns

308
Volunteers

This year the Zoo Crew Teen Volunteer Programs and Community Engagement programs grew extensively. Zoo Crew teens returned to volunteering in person, and docents resumed in-Zoo activities, accounting for a nearly 50% increase in the number of guest interactions from the previous year! The Docent Mentor program was created to help seasoned Docents train incoming Docents, and the Guest Service Support volunteer program was created to provide volunteers to help guests entering the Zoo, keep the Zoo looking good, and with office support.



EVENTS

A GREAT SPACE TO GATHER

This was an exciting year for events at the Zoo, as the team was able to introduce new events as well as welcome back some guest favorites.

Dinosaur Discovery brought 10 life-size dinosaurs to Reid Park Zoo as they might have appeared 66 million years ago. Guests were able to face-to-teeth with the mighty T-rex, stand up to a 45 foot-long Spinosaurus — resulting in one of the most well-attended Springs in the Zoo's history.

This year also marked the return of Wine Gone Wild and Brew at the Zoo, two events that invite an adult audience and community businesses into the Zoo. Spirits at the Zoo also made it's debut, inviting adults to have some Halloween fun in the name of conservation.

MASTER PLAN

Reid Park Zoo's ten-year master plan continues to move forward. Below are some of the major projects that we are focused on and developments this year.

WORLD OF PLAY

On May 18, 2022, we held a groundbreaking for Angel Charity for Children World of Play — the new and exciting nature play adventure zone. In this area, children will learn about animals and their habitats in Antarctica, the Redwood Forest and the Tropical Rainforest through play. There will be rope bridges, an ice tunnel, musical instruments, and representations of animals that live in these habitats.

This adventure zone will also include a new Nature Play area with graphics and training for nature play engagement volunteers funded through a grant from the Institute for Museum and Library Sciences.

We know that children benefit physically, socially, emotionally, academically, and creatively through time spent in nature. We can't wait to see the children enjoying this space.

Status: Under construction

Opening: Summer 2023



SLOTH

Plans got underway to welcome a new animal to Reid Park Zoo — the charismatic sloth. The new habitat will be located on the path going towards jaguar from flamingo in the South America area of the Zoo. This often-requested animal will be an ambassador for the sloths found in South America, helping tell their story and how you can help protect sloths in the wild.

Status: Construction expected to begin January 2023

Opening: Summer 2023

NEW PARKING LOT

Plans also got underway for a new parking lot, which is being moved to the area just south of Hi Corbett Field. Formerly a maintenance yard for Parks and Recreation, this parking lot will increase parking for Reid Park Zoo and the Edith Ball Adaptive Recreation Center (ARC) by 18%. In addition, there will be over 100 trees planted in this currently asphalt area.

Status: Construction expected to begin January 2023

Opening: Summer 2023

PATHWAY TO ASIA

This transformative project will bring many new animals of Asia to the Zoo.

New Location

After an extensive community conversation and public input process, the location of Pathway to Asia has been modified from the original area in Reid Park. The new location is in the current Reid Park Zoo and Edith Ball Adaptive Recreation Center parking lots. As noted previously, a new parking lot for both the Zoo and the ARC will be constructed to the north of the Adaptive Center. This new location is a harmonious solution for everyone. It uses no green space in the park, transforms 45% of former asphalt areas into green space in the Zoo and does not affect Lakeshore Lane, or the ponds in Reid Park. It also results in operational efficiencies for the Zoo with easy access to the animal hospital and commissary and a more compact footprint for guests.

New animals

Malayan Tigers are the smallest tiger and most endangered with fewer than 150 left in the wild. The tiger habitats will occupy the largest area of Pathway to Asia. This area includes two spacious world-class habitats with streams and waterfalls, underwater viewing of the water loving cats for our guests, a heated comfort rock to lay on, room for enrichment and play and for potential cubs in the future.

In addition, you can expect to see siamangs swinging through the air, an aviary where you will be able to

feed the beautiful birds of Asia, red pandas and a return to Reid Park Zoo of the muntjac, a small deer of southeast Asia. The Robert Hamilton Tropical Discovery Center will be home to Komodo dragon, Indian star tortoise, fruit bats, and more.

All the comforts for our guests

The Kasser Family Lotus Pavilion will be an indoor space where you can attend conservation lectures, or can be rented, with space for up to 250 people with a catering kitchen, prep rooms and other amenities. With an event lawn attached, you will view the siamangs and other animals from the front porch.

Food service will be provided at carts or the nearby main café where you can get our guests' favorite fresh baked pretzels.

Docents will have stations throughout, and a special station in the Tropical Discovery Center to share those special facts about the animals.

Guest amenities include seven restrooms, a comfortable nursing room for nursing moms, and a family restroom with adult changing table to make visits easier for caregivers.

Telling the story

Most importantly, we will be helping form connections with these animals as our guests get to know and love them as we do.

Status: Construction expected to begin September 2023

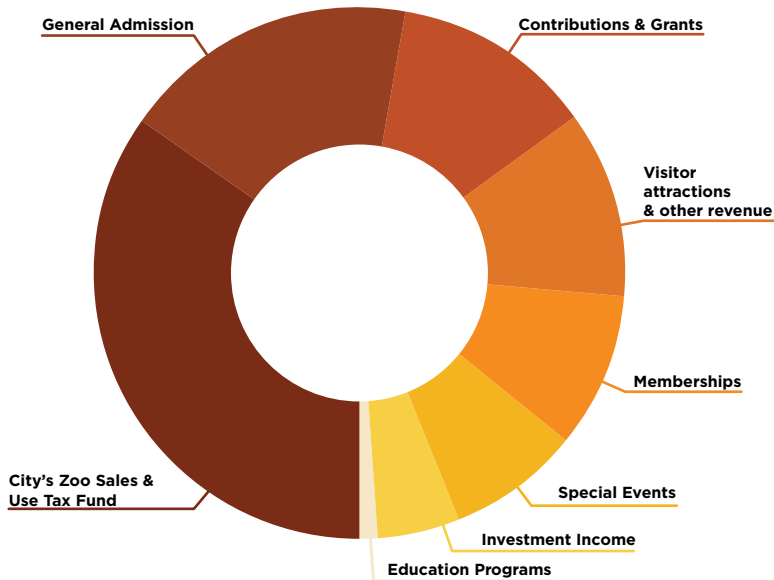
Opening: Fall 2025



FINANCIALS

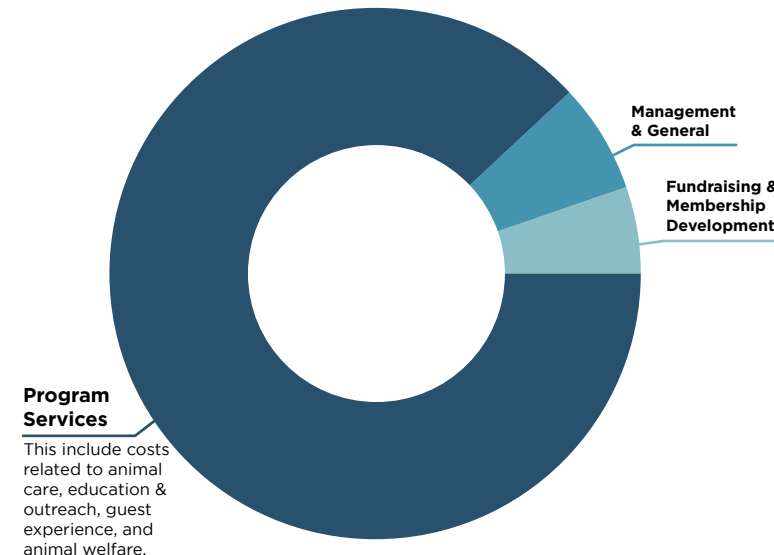
A YEAR IN REVIEW: BY THE NUMBERS

Reid Park Zoological Society strives to ensure financial security for the future of Reid Park Zoo. Through a close partnership with the City of Tucson, the support of Tucson voters, ticket sales, and other fundraising efforts, we commit to make sure Reid Park Zoo is able to provide excellent animal care and connect people to wild animals and wild places for years to come.



SUPPORT & REVENUE

	<u>June 30, 2022</u>	<u>June 30, 2021</u>
City's Zoo Sales & Use Tax Fund	\$ 4,222,500	\$ 3,736,098
General Admission	\$ 2,194,374	\$ 1,556,516
Contributions & Grants*	\$ 1,512,887	\$ 3,350,427
Memberships	\$ 990,799	\$ 781,796
Visitor Attractions & Other Revenue	\$ 1,371,360	\$ 652,937
Special Events	\$ 1,152,753	\$ 443,550
Education programs	\$ 117,957	\$ 92,684
Investment Income	\$ (593,646)	\$ 714,236
TOTAL SUPPORT & REVENUE	\$10,968,984	\$11,328,244



EXPENSES

	<u>June 30, 2022</u>	<u>June 30, 2021</u>
Program Services	\$ 7,924,073	\$ 6,528,568
Management & General	\$ 596,773	\$ 502,161
Fundraising & Membership Development	\$ 474,445	\$ 398,881
TOTAL EXPENSES	\$ 8,995,291	\$ 7,429,610
Change in Net Assets	\$ 1,973,693	\$ 3,898,634
Net Assets - Beginning of Year	\$ 20,773,191	\$ 16,874,557
NET ASSETS - END OF YEAR	\$ 22,746,884	\$ 20,773,191

Program Services

This include costs related to animal care, education & outreach, guest experience, and animal welfare.

Gilbert G. Aguirre Circle

is named after native southern Arizona rancher, philanthropist, and major Zoo supporter Gilbert G. Aguirre. The Circle honors contributors of \$10,000 or more to Reid Park Zoo.

Gilbert G. Aguirre, Ph.D.*
A Thru Z Consulting
A.J. & M.D. Ruggiero Memorial Trust*
Anonymous
Sheila Armstrong
Jamie & Garret Balensiefer
Jeffrey and Mica Bane
Rodney & Connie Boorse
Lee H. Brown Family*
Casino Del Sol Resort
Cemrock Landscapes, Inc.
Anonymous
Al and Sharyn Chesser
Jim and Vicki Click*
Click Family Foundation*
Roger Conley and Taylor Lawhorn
Cox Communications
James and Margaret Coyle
Bill and Mistie Durbin
Freeport McMoRan Sierrita*
Carolyn Goodrich
Roger and Kathy Gross
Mark J. and Christine F. Hall Family Foundation
Gerry Hallowell

Anonymous*
Mary Hillmon
Larry Holcomb and Jeanne Moody
Sue Hopf
David and Cathy Hutchens
Jim Click Automotive
Julianna T. Kasper
Michael and Beth Kasser
Joseph Stanley Leeds Foundation
Ellen Walling Lewis
Lloyd Construction Company, Inc.
Dr. Reuben Merideth DVM, DACVO
Charles M. Pettis
Shelley Pozez
Pyramid Federal Credit Union
The William and Mary Ross Foundation
Anonymous
John M. Simpson Foundation
Tucson Electric Power Company
Tucson Foundations*
Lora White
Phil Derkum and Flora Yee
Anonymous

***Indicates Lifetime Aguirre Circle Members**

THANK YOU, DONORS!

Thank You Donors! Reid Park Zoo gratefully acknowledges the generous individuals, businesses, foundations, and partners whose contributions July 1, 2021 -June 30, 2022 made our work possible. Thank you for your dedication and passion for wildlife and conservation.

We strive for accuracy; however, if your name or information has been listed incorrectly, we hope that you will contact us with the correction. Reid Park Zoological Society respects donors' privacy and does not share donor information with any other entities.



Legacy Circle

The Reid Park Zoo Legacy Circle is a recognition program to thank and honor individuals for the support they provide the Zoo in the future through their estate plans or life income gifts.

Kathy Alexander and Paul Lindsey
Anonymous
Vicky Arnell
Drs. George and Barbara Ball
Jeffrey and Mica Bane
Anonymous
Susan Basford
Jeffrey J. Baymor
Anonymous
Ronnye Bertoglio
Gail Brandt
Gail Brown
Stanley A. Brown
Anonymous
Tong Cheng
Al and Sharyn Chesser
Barbara Chilson
John Clark
Nate Clark
Roger Conley and Taylor Lawhorn
Janet Corber
Jamie Dasher
Phil Derkum & Flora Yee
John Doyle and Ann Forsberg-Doyle
Marla Endicott
Bruce and Gilda Eneboe
Michael and Maudene Fruehwirth
Jaz and Yui Garewal
John Guthrie
Michael A. Halle
Michael Hannley
Ed Hansen
Stephanie and Ross Henderson

Trudy Hersch
Larry Holcomb and Jeanne Moody
Mary C. Huffman
Stephanie Hughes
Anonymous
Jason Jacobs
Terry Jones
Julianna T. Kasper
Sheldon and Dr. Xenia King
Kristian & Nancy Kluge
Ann Koontz and Tim Mitchell
Steve Larsen
Leslie Laux
Lainie Levick
Ellen Walling Lewis
Anonymous
Wendell Long
Manuel G. and Melissa A.
Mendibles
Dr. Reuben Merideth DVM,
DACVO
Brooke Miner
Kassi Molfetas
Larry & Debby Narcus
Anonymous
Dorothy M. Pellegrino
Charles M. Pettis
Susan Rubin
Helen Russo
Joann Schultz
Mary G. Schulz
Denice R. Shepherd
Anonymous

Mr. Gail H. Skinner and Mrs. Marlene C.
Skinner
Bridget Stephenson
Anonymous
Mr. & Mrs. Jeremy B. Ulibarri
Joanie VanCase
Nancy VanCase
Sharon Lubick Walsh
Diana Whitman
Elizabeth Wilson
Karen J. Wong
Anonymous
Stephanie and Gary Zinman



Tributes

In Honor of All the keystone species known and unknown

Janet Ageh

In Memory of Maria Alvarado Leyva

Roger Conley & Taylor Lawhorn

In Honor of David H. Andrews

Sara & Paul Russell

In Memory of Ray and Fran Armstrong

Robert Nogales & Margie Fithian

In memory of “Felix & Lucy” Bane

Gail Brown

In Honor of Susan Beesemyer and Jed Dodds

Peggy & Jon Rowley

In Memory of Marjorie Hartsock Brewer

Kathy Hartsock

In Honor of Gail Brown

Chris & Carol Dimit

In Memory of Bobby Bryant

Cynthia Bryant

In memory of “Lucky” Conley

Gail Brown

In Honor of Carrie Dean

Deborah Cummings

In Memory of Giraffe Denver

Gail Cocker
Dianne Maki-Sethi and Dr. Ravi Sethi
Jeremy & Anna Ulibarri

In Memory of “Sandy” Dodds

Gail Brown

In Memory of Glenda Faye Eastman

Karen Vanderbilt

In Memory of Mike & Gwen Elbert

Casey Stockdale

In Memory of John and Edith Elwood

Ann Elwood

In Memory of Leslie Faber

Jeffrey Boyce

In Memory of “Minnie” Feder

Gail Brown

In Memory of Ric Fetter

Rodney & Connie Boorse

In Memory of “Clooney” Fruehwirth

Gail Brown

In Memory of “Bindi” Garrigues

Jim & Debi Garrigues

In Memory of Jeff Guedel

Ernest & Barbara Baume

In Memory of Karen F. Lamb

Mark J. and Christine F. Hall Family Foundation

In Honor of Michael Halle

Thomas & Joanie Healy
Carol Huffman

In Memory of Christopher Hardin

Joyce Blee
Bob & Carolee Capp
Abby Arnold

In Honor of Rick & Judy Hardman

Max Helser

In Memory of Martha Hart

James & Danielle Hart

In Honor of Stephanie and Sedona Hilkemeyer

The Schmidt & Barton Family Fund

In Honor of Kathy Hulse

Rita Sainz

In Memory of Rodney Jilg

Nina Trasoff

In Memory of “Teddy” Kasser

Gail Brown

In Honor of Suzanne Kelly

Barbara Else

In Memory of Maxine Kossover

Anonymous

In Memory of Michael Kreppel

Marla Endicott

In Memory of “Candy” Lim

Judy Rader
Gail Brown

In Honor of Art MacDonald

Chelsea Cloeter

In Honor of Joan Marum
Michael & Megan Troughton

In Honor of Mary and Michael Matthews
Mercedes Smith

In Memory of Carolyn Matzkin
Nancy Natelli

In Memory of Althea McClure
Deborah Born

In Memory of “Bruno” Mendibles
Gail Brown

In Memory of Rita Nordmeyer
Jennifer Burros
Cindy & Mickey Petersen

In Memory of Lois Olsrud
Rodney & Connie Boorse

In Honor of Debbie and Gary Paulsen
MaryAnne Lefevre

In Memory of Earl Pishioneri
Sylvia Pishioneri

In Honor of Dr. Michael Rand
Debra & Timothy Minahen

In Honor of Reid Park Zoo Staff
Sheldon Fishman

In Honor of Ruth Reiter
Janice Lefkowitz
Simon Rosenblatt

In Memory of John Rhodes
Brandy Long

In Memory of Eric Scott Rosales
Anonymous
Lee Heating & Cooling

In Memory of Sandra Saccani
Toni & Tino Saccani

In Memory of Mauricio Salazar
Caroline DuPont

In Honor of Page Satterfield
Amy Satterfield

In Memory of Joyce Schumann
Nancy & Richard Bohman
Gail Brown
Sandy & Chris Simanton

In Memory of Audrey W. Stein
Frances Ahlich
Dale Stein

In Honor of Deborah Steinhour
Emily Steinhour & Michael Singer

In Recognition of Matt Vieth
John Consedine

In Memory of Betty White

Anonymous
Anonymous
Merry Bowman
Jerome Smith & Jean Bridges
Joan Carr & Warren Carr
Jotrisha Cook
Courtney Coombe
Anita Cooper
Collin Corbett
Rita Cote
Rebecca Degtjarjov
Mic Denfeld & Claudette Gross
Rebecca Egbert
Sharon Gadziemski
Nancy Garavito
Bob Geremia
Paula Hellsten
Sue Hopf
Christina Hornyan
Pat Laufer
Paula Marshall
Annie Martin
Dierdre & Earl McCullough
Darlene Murphy
Teri Orsburn
Emily Theilan
Latricia Vega
Adrienne Wallen
Jaylene Wilson



2021-2022 BOARD OF DIRECTORS

Society Board Chair

Dr. Shane Burgess

Vice Chair

Cathy Hutchens

Secretary

Robert Charles

Treasurer

Matt Bingham

Past Chair

Lisa Lovallo

Kathy Alexander

George Ball

Mica Bane

Susan Beesemyer

Nate Clark

Chad Driedger

Dallas Dukes

Neal Eckel

Mike Halle

Mike Hannley

Sheldon King

Steve Larsen

Jason Lazarow

Edmund Marquez

Patricia O'Callaghan

Lesah Sesma-Gay

Richard White

Emeritus Director

Denice Shepherd

Donna Warfield

Jim Zarling

Terri Zarling

Foundation Board Chair

Nate Clark

Vice Chair

Mica Bane

Treasurer

Steve Larsen

Secretary

Susan Beesemyer

Past Chair

Dr. George Ball

Bob Charles

Chad Driedger

Mike Halle

Mike Hannley

Sheldon King

Jason Lazarow

REID PARK ZOOLOGICAL SOCIETY

President & CEO

Nancy J. Kluge

Chief Development Officer

Gail Brown

Director of Marketing & Events

Deborah Carr

Director of Business Operations & CFO

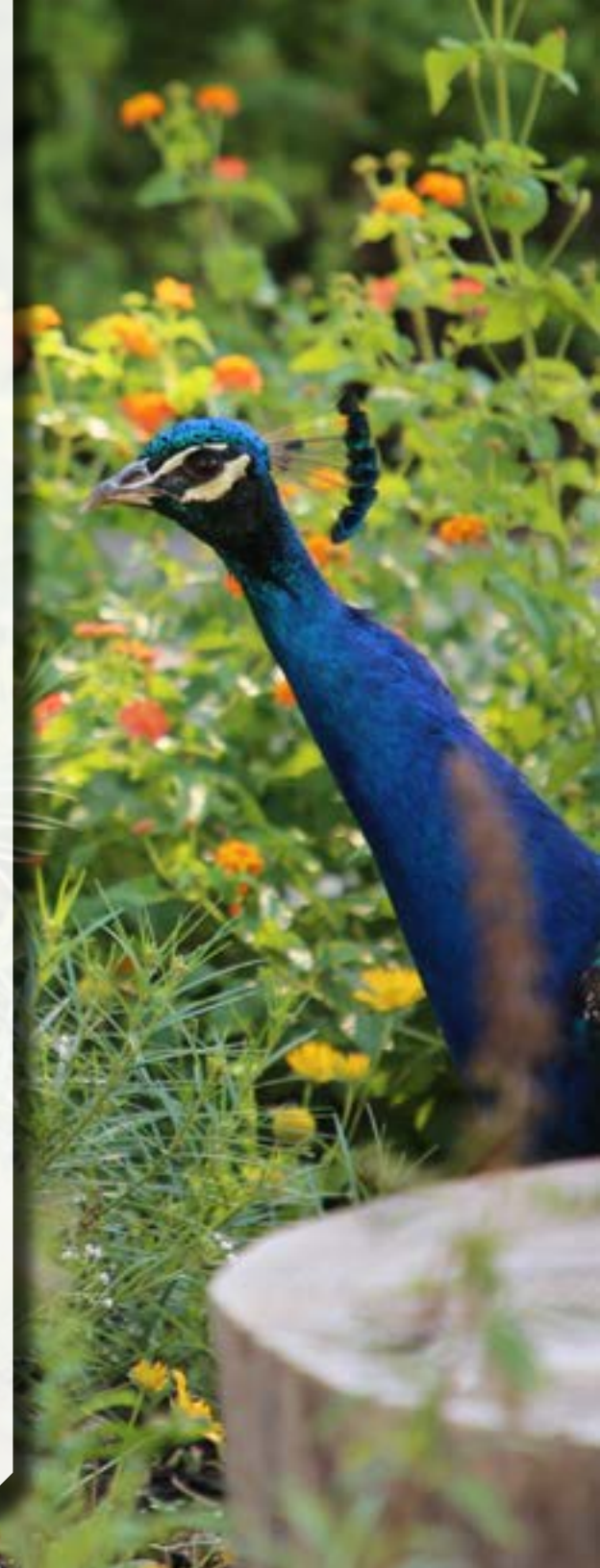
Tong Cheng

Director of Human Resources

Helen Smart

Director of Zoo Operations

Sue Tygielski, PhD





Reid Park Zoological Society
1030 S Randolph Way
Tucson, AZ 85716
520-881-4753
ReidParkZoo.org

EIN# 94-2379052

Accredited by:

ASSOCIATION
OF ZOOS &
AQUARIUMS

SAFE
SAVING ANIMALS
FROM EXTINCTION



CITY OF
TUCSON